

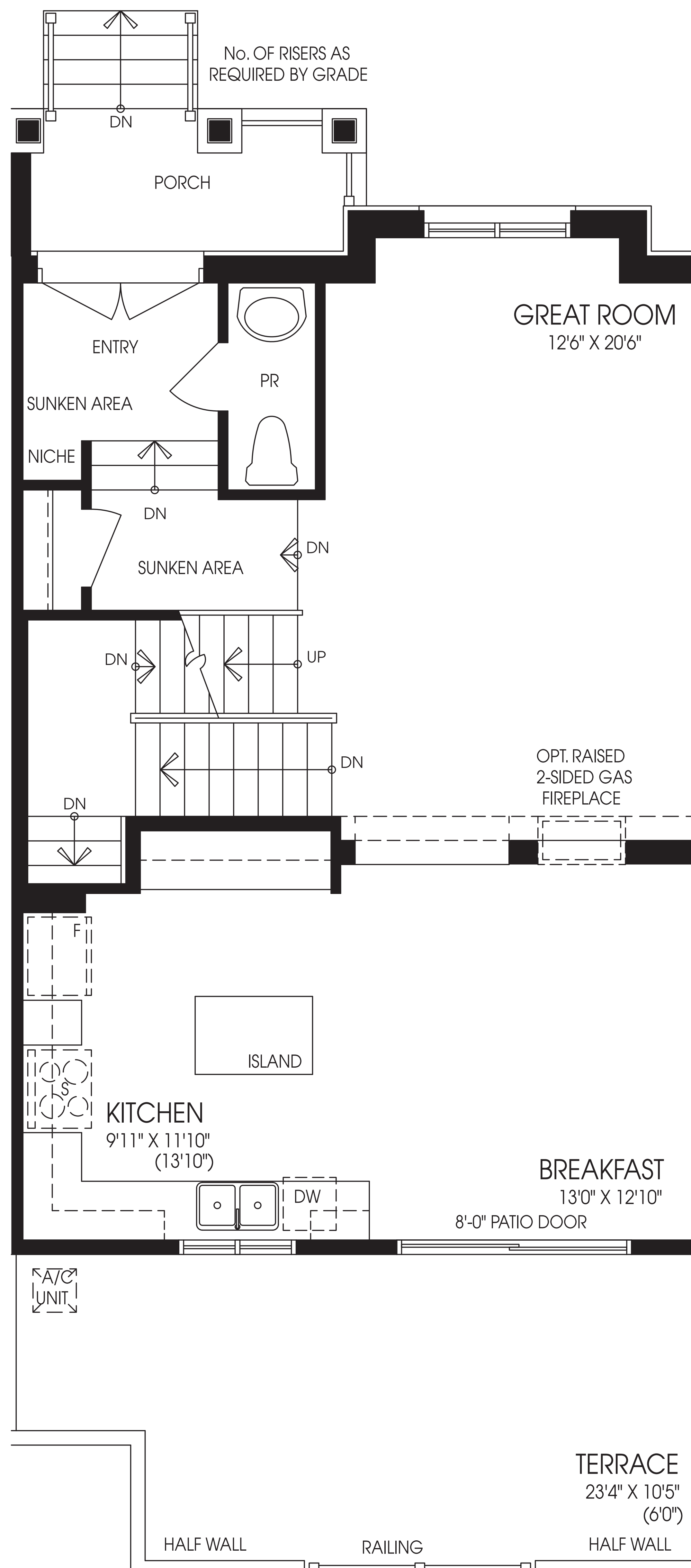
ADAMS

ELEV. A1 :: 1938 SQ. FT. | ELEV. A2 :: 1943 SQ. FT.

ELEV. A3 :: 1956 SQ. FT. | ELEV. A5 :: 2021 SQ. FT.

INCLUDES ELEV. A1 :: 272 SQ. FT. | ELEV. A2, A3 :: 273 SQ. FT.
ELEV. A5 :: 292 SQ. FT. OF FINISHED BASEMENT AREA

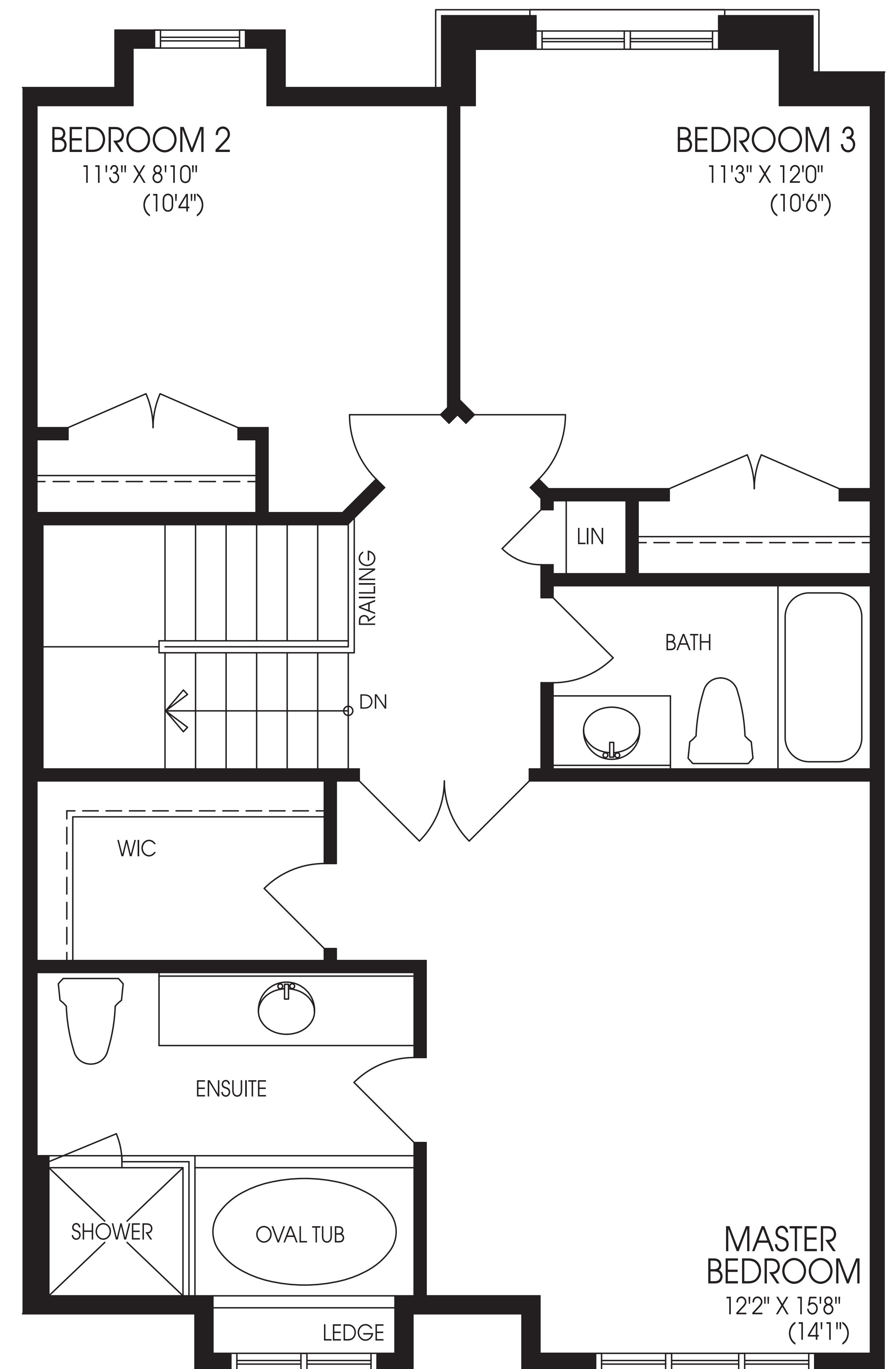
FRONT ELEVATION 'A1'



REAR ELEVATION 'A1'/A2'

MAIN FLOOR
UNIT TA INT.

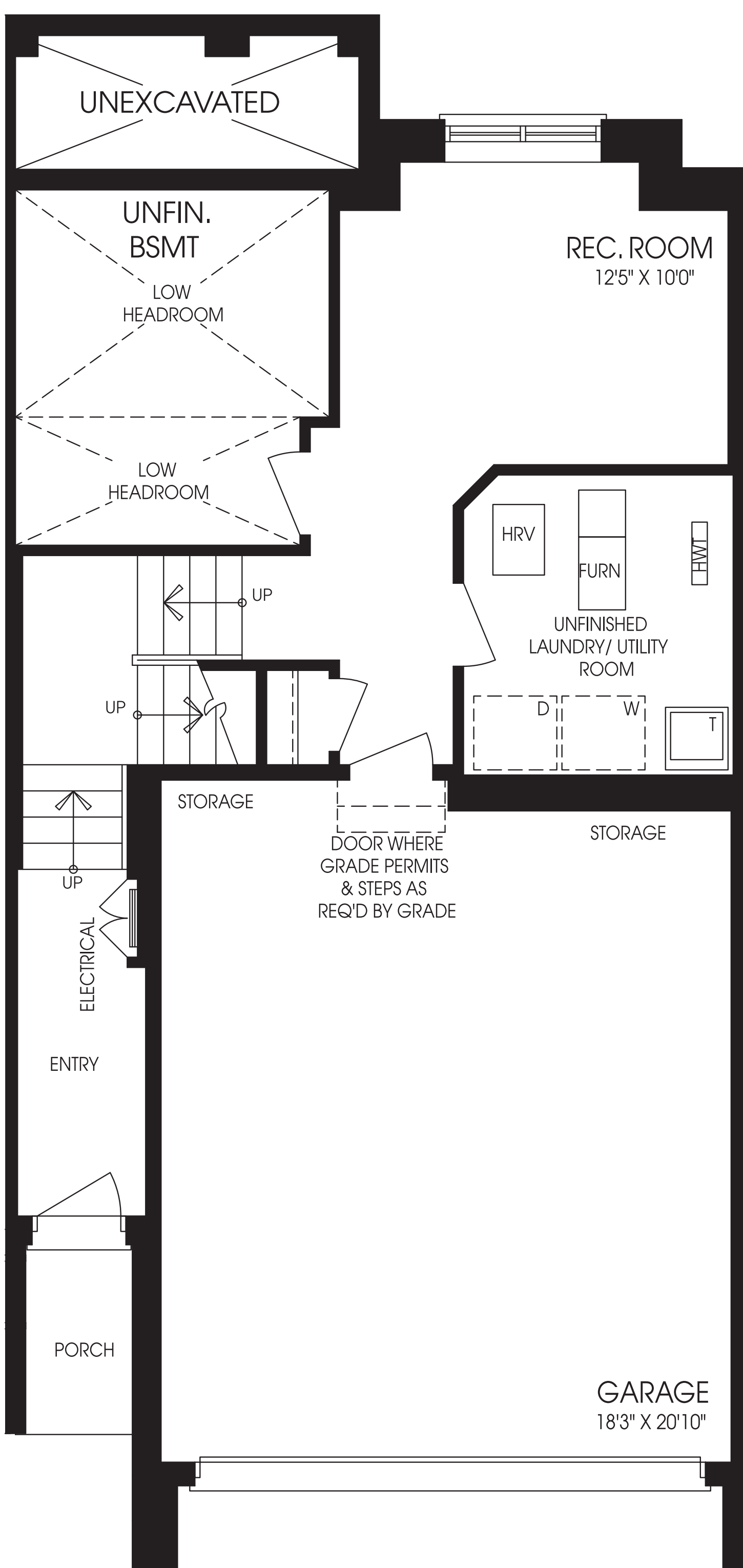
FRONT ELEVATION 'A1'



REAR ELEVATION 'A1'

SECOND FLOOR
UNIT TA INT.

FRONT ELEVATION 'A1'



REAR ELEVATION 'A1'/A2'

BASEMENT FLOOR
UNIT TA INT.

The floorplans and elevations shown, dimensions, specifications and architectural detailing are pre-construction plans and may be revised or improved as necessitated by architectural controls and the construction process. All dimensions are approximate. Actual usable floor space may vary from the stated area. House may be reversed and Purchaser agrees accept same. Specifications are subject to change without notice. Steps may vary at any exterior entrance. Illustrations are Artist's concept. Exterior railings on plans only as required by grade. E. & O. E. TA